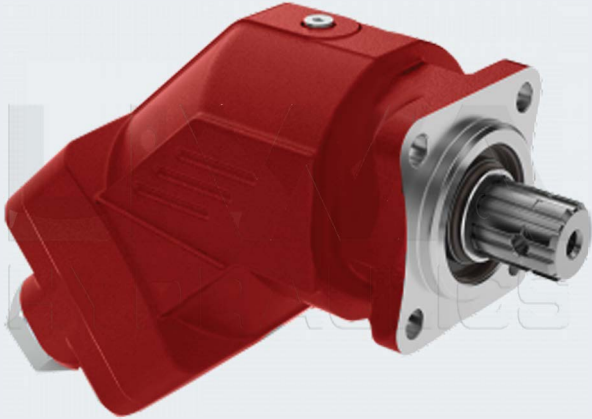
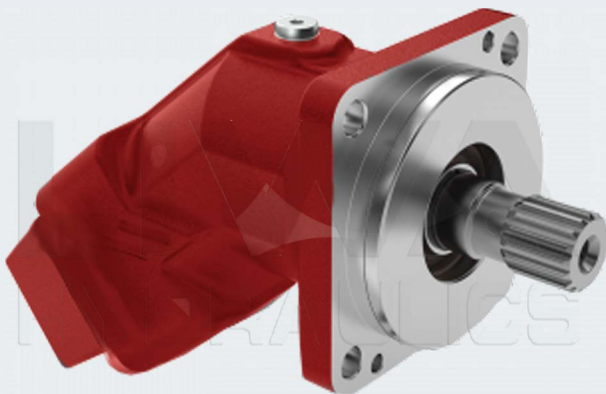


Piston Pump **BENT AXIS PUMP ISO**

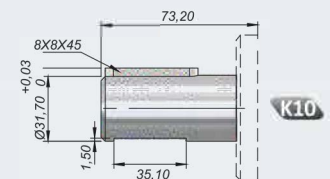


Product Code		Displacement (cm ³ / rev)	Max.Cont. Pressure (100%)(bar)	Max.Peak Pressure (6 sec.max.)(bar)	Max.Cont. Speed (rpm)	Inlet	Outlet
CCW Left	CW Right						
44747022	44748022	22	300	350	2920	G3/4"	G1/2"
44747033	44748033	33			2890		
44747045	44748045	45			2250		
44747056	44748056	56			2300	G1"	G3/4"
44747065	44748065	65			2300		
44747080	44748080	80	250	300	2135	G1 1/4"	G1"
44747107	44748107	107			1850		
44747125	44748125	125			1790		

Piston Pump **BENT AXIS PUMP SAE C**



Available Shaft Types



Product Code		Displacement (cm ³ / rev)	Max.Cont. Pressure (100%)(bar)	Max.Peak Pressure (6 sec.max.)(bar)	Max.Cont. Speed (rpm)	Inlet	Outlet
CCW Left	CW Right						
44777022	44778022	22	300	350	2920	G3/4"	G1/2"
44777033	44778033	33			2890		
44777045	44778045	45			2250		
44777056	44778056	56			2300	G1"	G3/4"
44777065	44778065	65			2300		
44777080	44778080	80	250	300	2135	G1 1/4"	G1"
44777107	44778107	107			1850		
44777125	44778125	125			1790		